

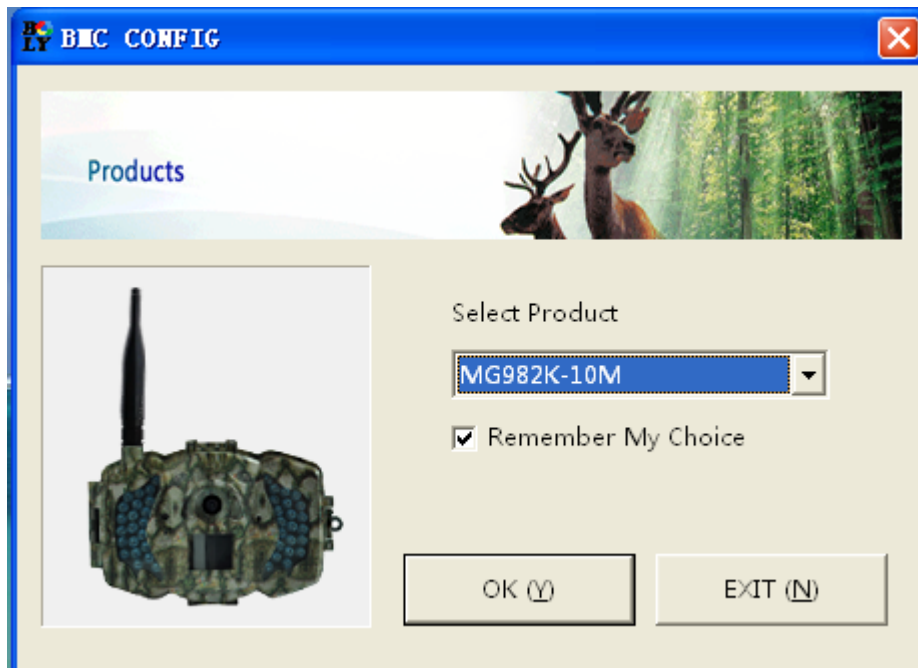
## BMC-config Usage Instructions

Note this software is only for König SAS-DVRODR3x cameras, which are identical to SG880MK-xmHD cameras

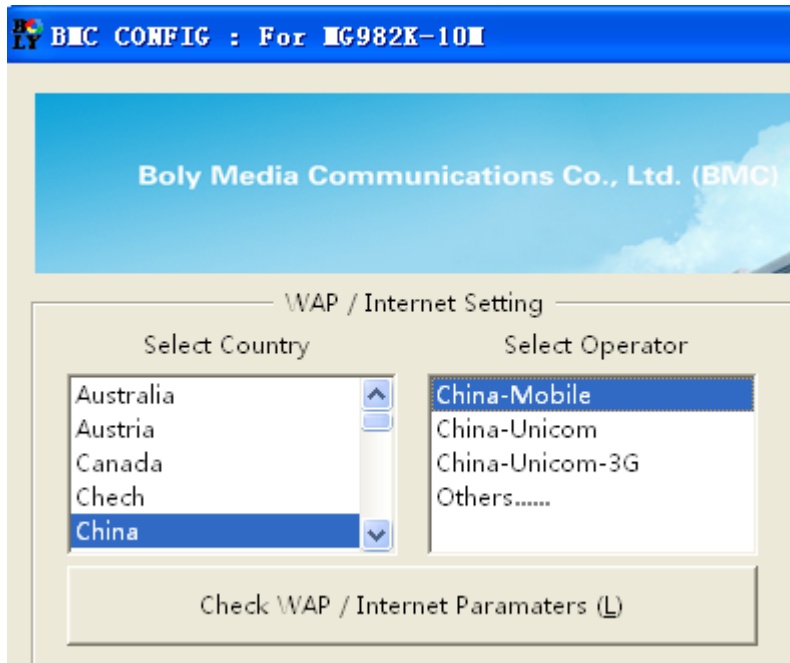
1, Format your SD card

2, Connect the camera to your PC, open the BMC-config,

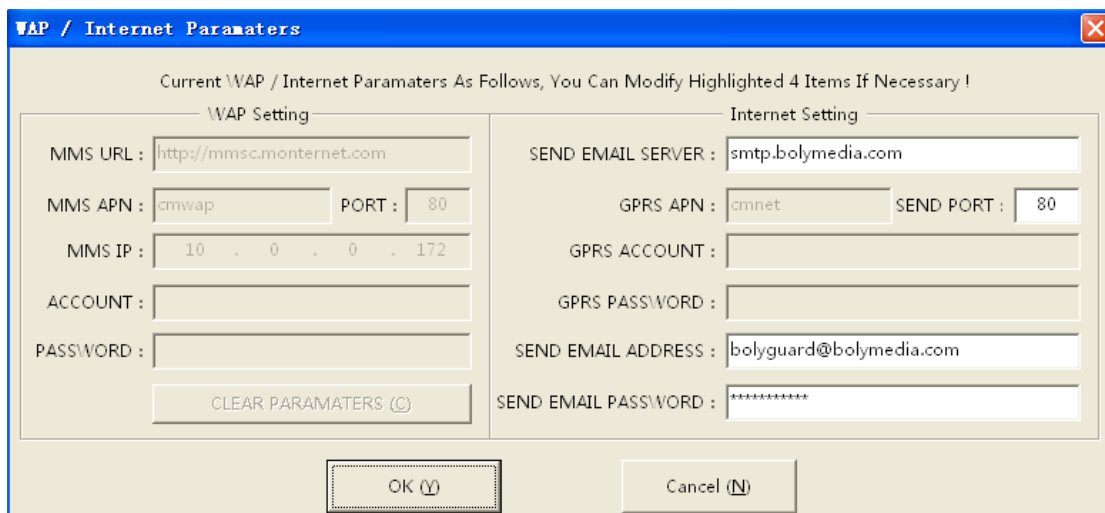
choose the model for camera

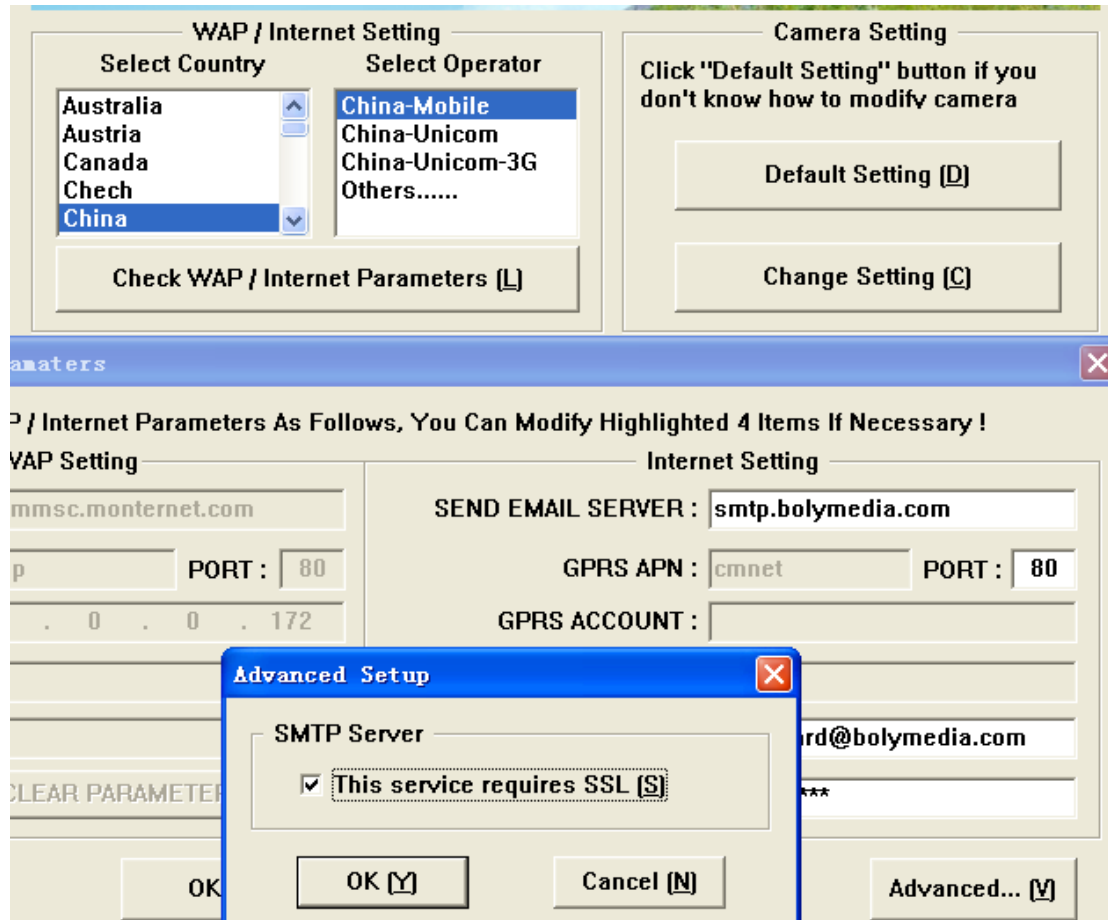


3, Select your country and SIM card operator

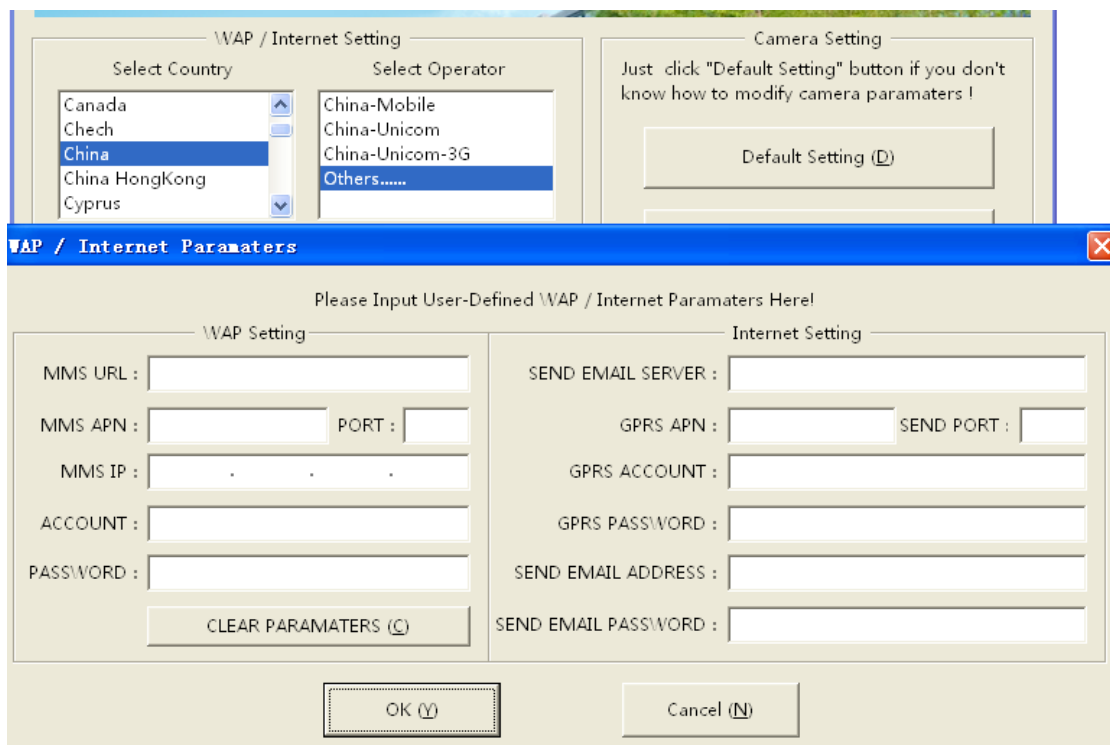
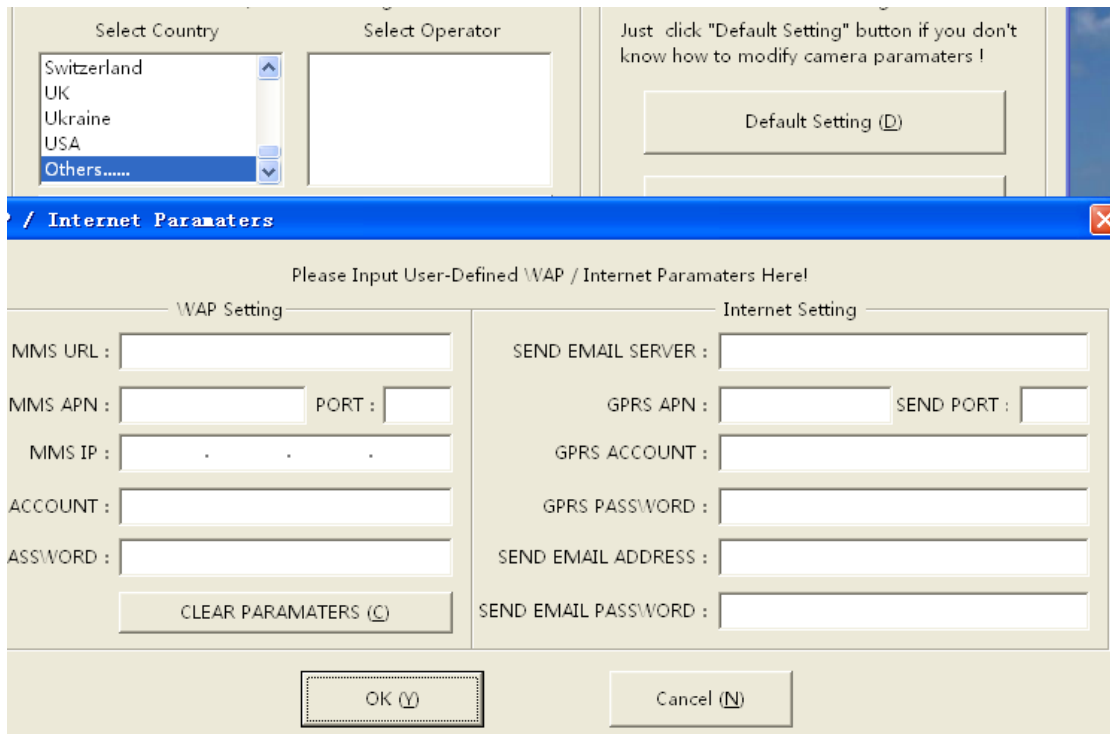


4, Then “check WAP/Internet Parameters” to see if these parameters are right. If you use an SSL email as sending email, please click “Advanced” button to mark it.

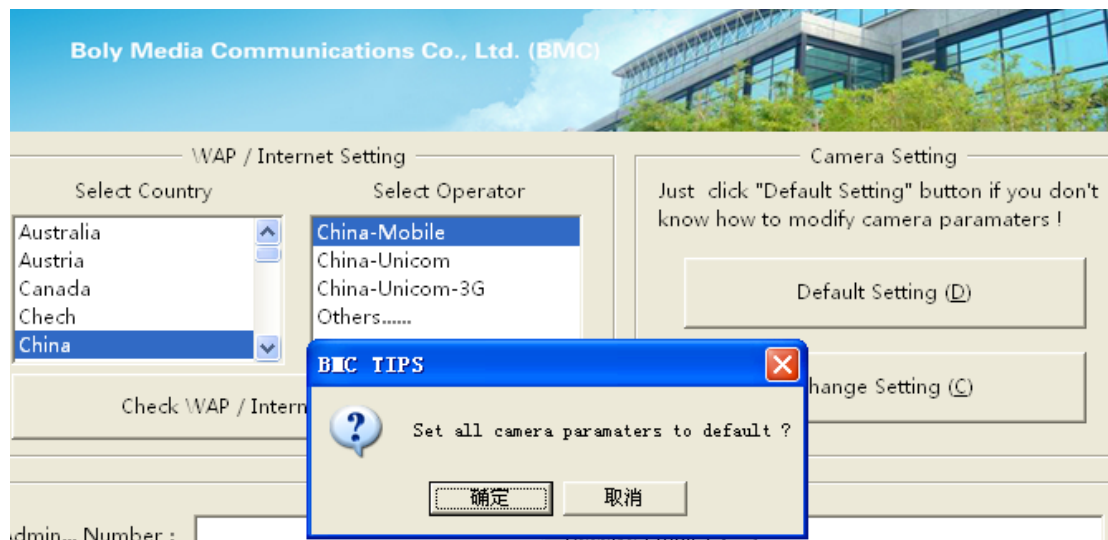




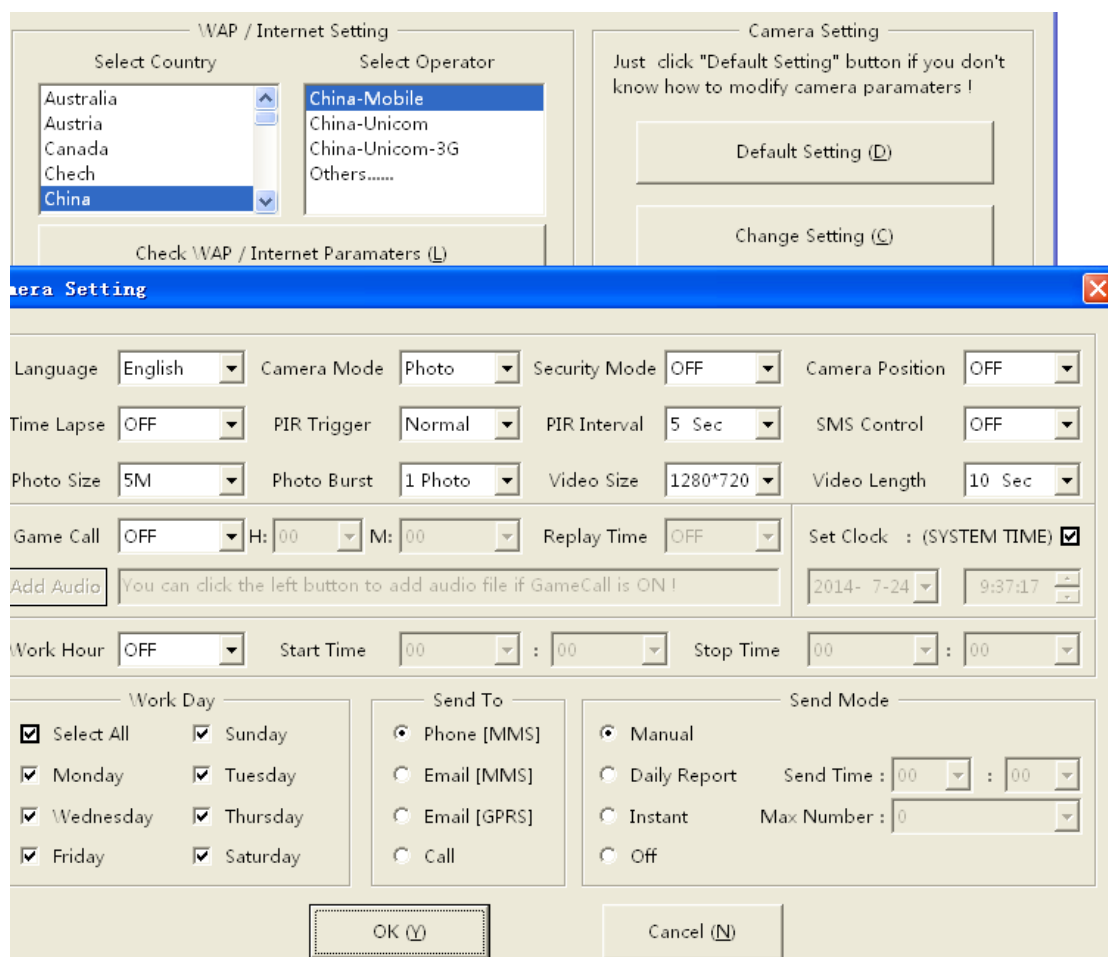
5, If your country or SIM card operator is not in the list, try to find “Others”, then input the parameters you need.



6, It is suggested to use default settings when you first use the application software.

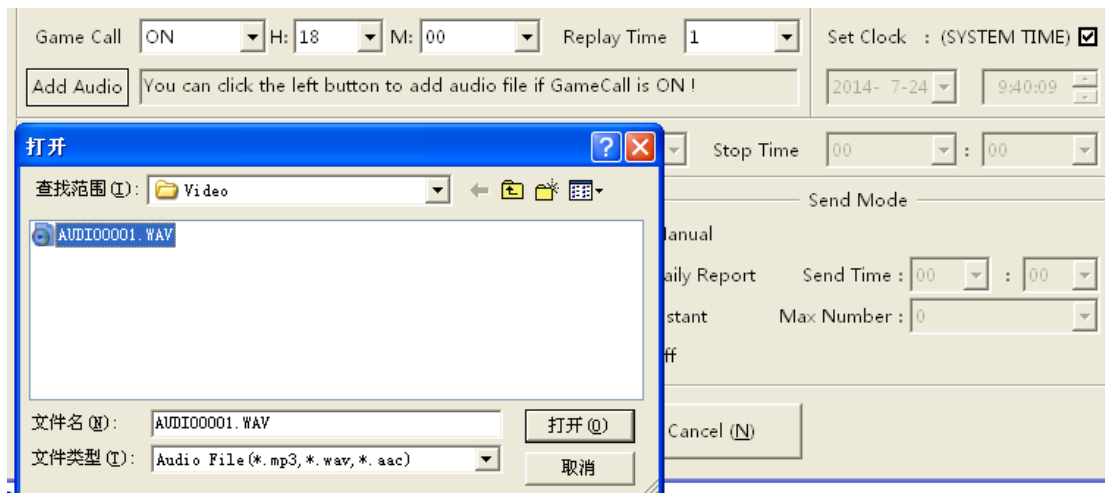


## 7, “Changing Setting” is for your customized.

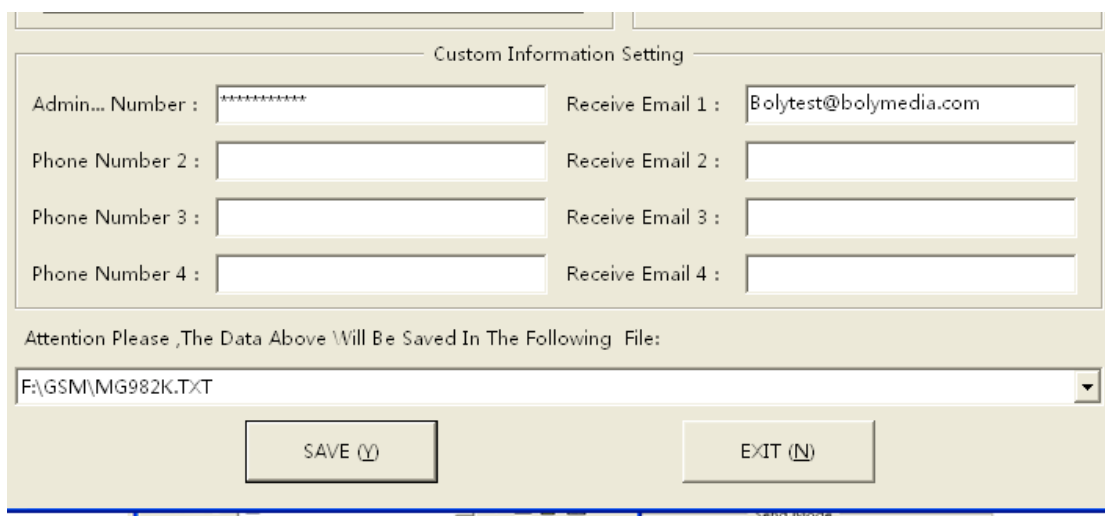


8, The default set for Game call is Off, change it to On and fill in when you want it to play if you want to use this function.

Then select the audio to add in.



9, Input at lease one receiving phone number or e-mail address.



10, Save this .txt file into your SD card in camera.